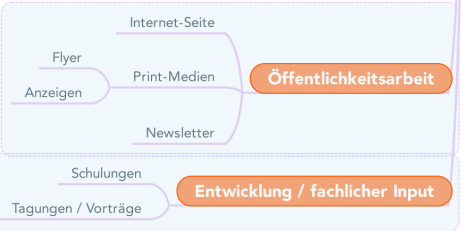
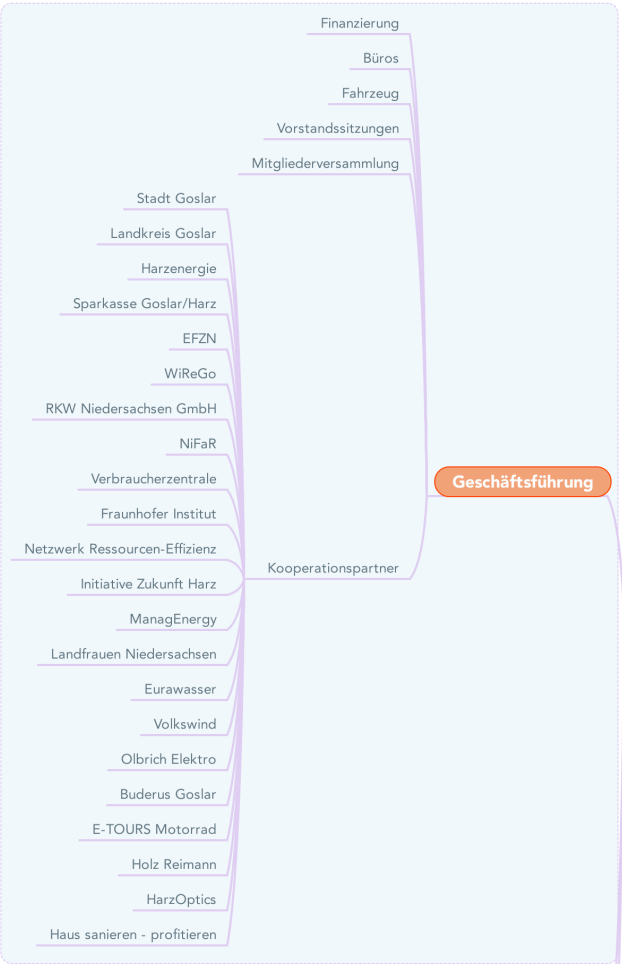
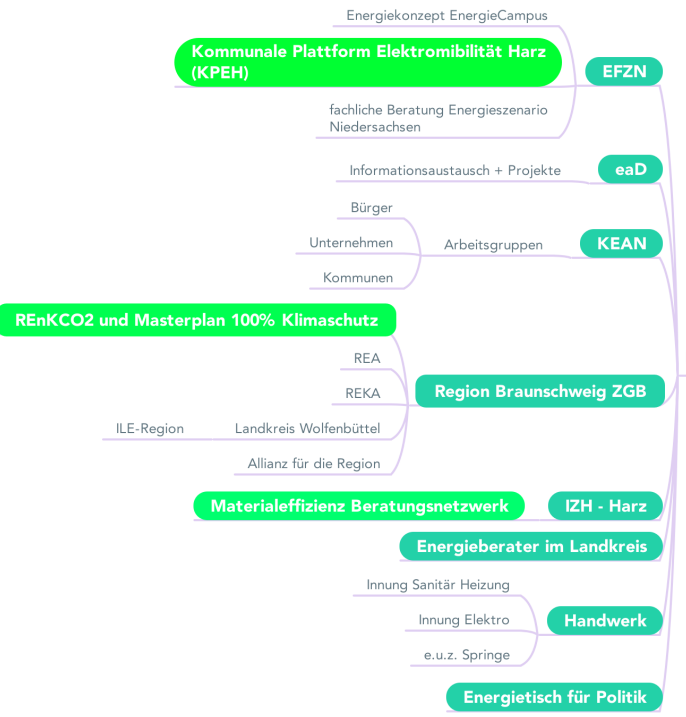


# ERA Aufgabenstellungen Juni 2016

## Organisation des Vereins



## Netzwerk



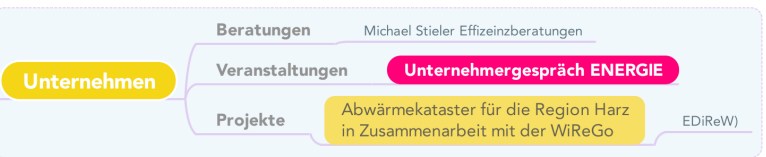
## Klimaschutzmanagement



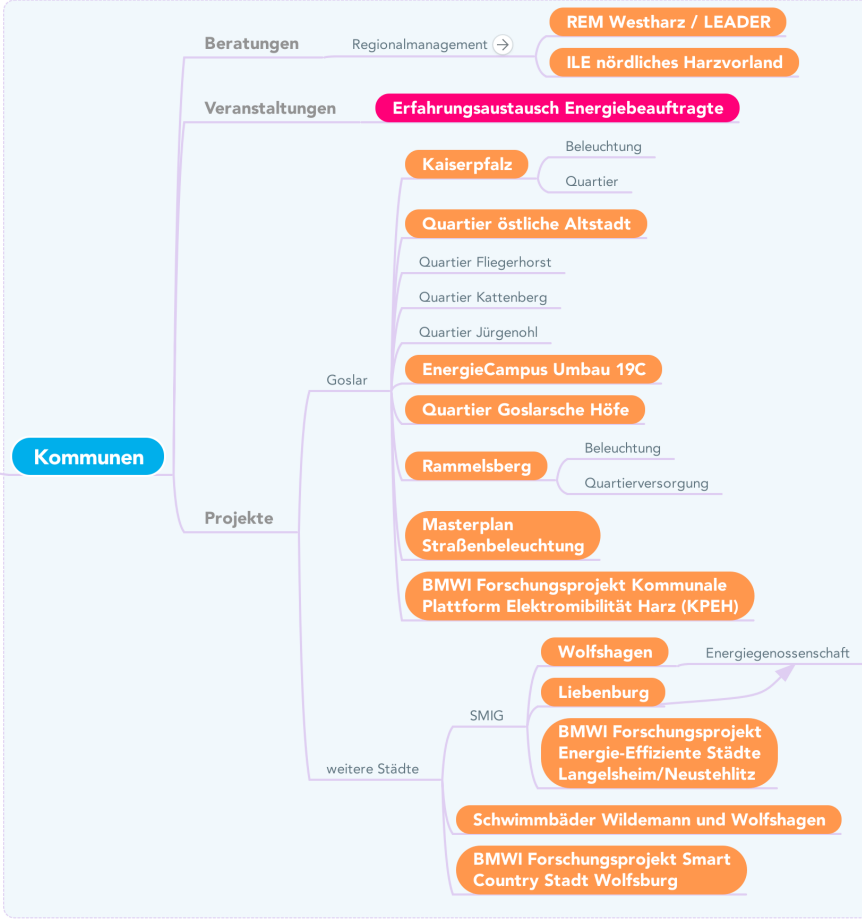
## Bürger



## Unternehmen



## Kommunen



# Regionalmanagement

[http://www.ml.niedersachsen.de/portal/live.php?navigation\\_id=34892&article\\_id=133131&psmand=7](http://www.ml.niedersachsen.de/portal/live.php?navigation_id=34892&article_id=133131&psmand=7)